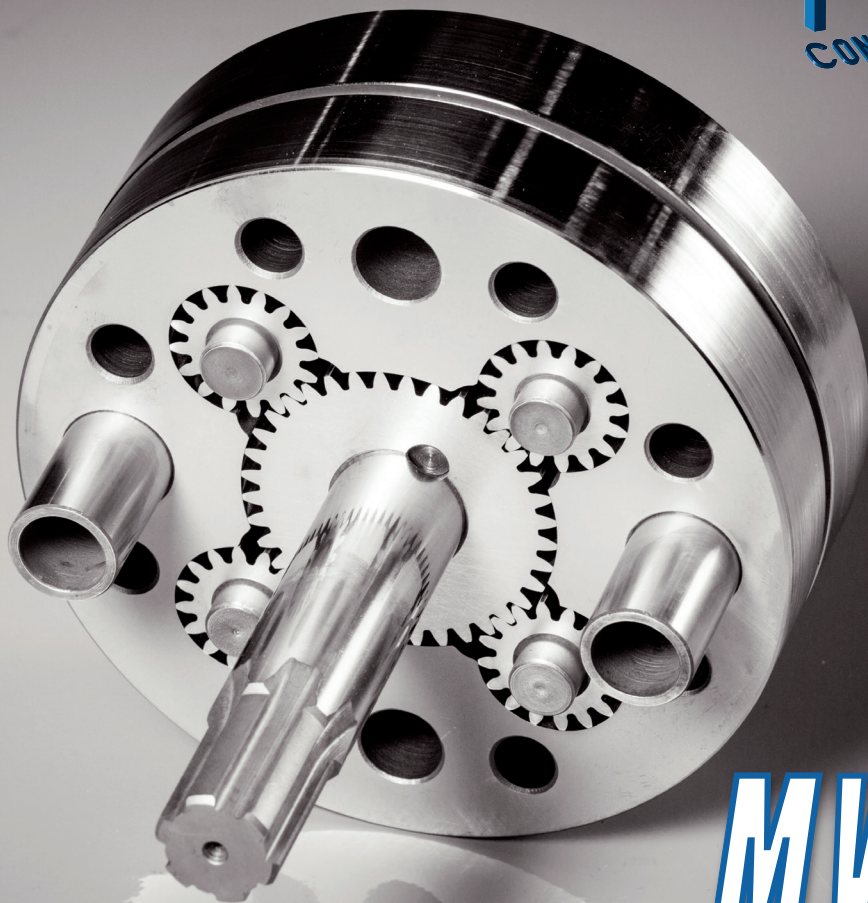
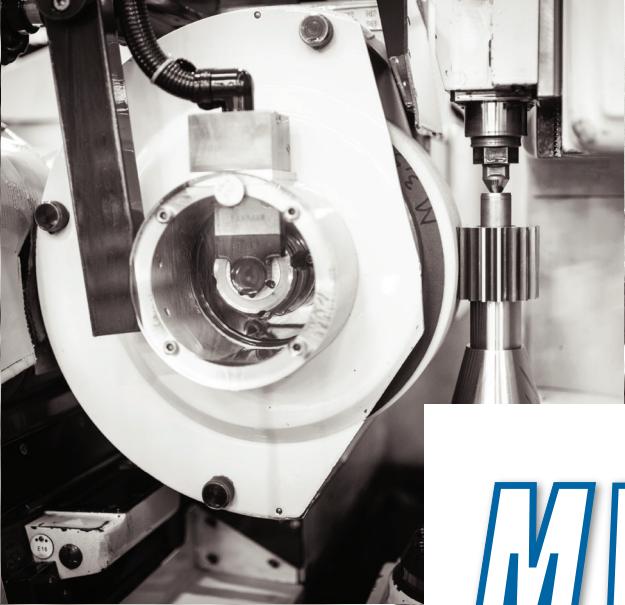


PRODUCT PORTFOLIO 2016

PMO
CONSULTING



MVV
GEAR PUMPS

RANGE OF PRODUCTS

General dosing, PU, process applications

PL8 – PU, general purpose	6
PL2 – fully stainless steel: PU, general purpose	7
PAL – abrasives coloring agents (PU)	8
PLR – heated casing	9

Chemical range

PLZ – process metering	10
PUG – metering, transfer & circulation	11
PL4 – thin and critical fluids	12
Complete pump units	13

Painting systems

PLV – modular metering pumps for paint industry	14
WLV – flushing valve	15
RCC – color change system	16

Melted glue pumps

PA6/7 – hot melt, one outlet	18
PF2 – hot melt, two outlets	19

Synthetic fibers pumps

PAx – man made fibers, square arrangement	20
PFx – man made fibers, round arrangement	21

Yarn lubrication and finishing

P94 – ultra micro finishing	22
P96 – micro finishing	23

Polymer extraction & booster

PAE – high temperature	24
PLE – low temperature	25

Textile pumps

P6x – acrylic	26
P55 – acetate	27
P2x – viscose	28
P5x – spandex and elastomers	29

Drive systems

30

Static mixers

31

Engineering

32

Spinnerets

35

Spinning beams

36

After sale

38

Special parts

39

Company profile

41

Contacts

43

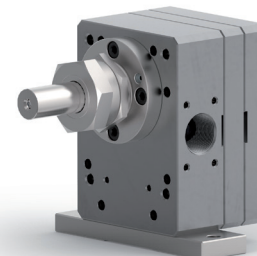
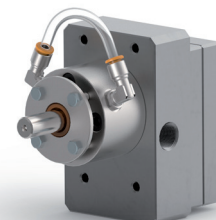
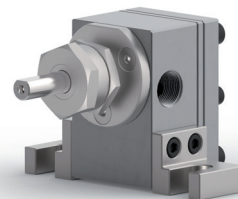
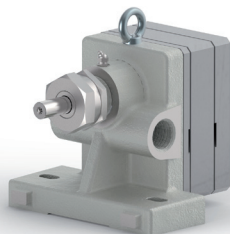
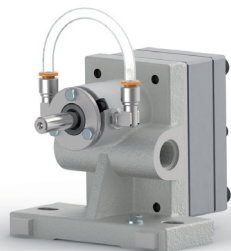
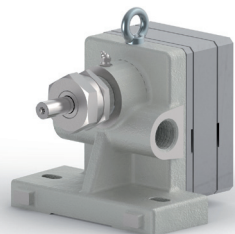
Shown data are indicative only; please contact company for specific application
l/h indication based on 10-150rpm max (except PUG and PL4 series)

- suitable for polyols, isocyanates, catalysts, additives and silicones
- unparalleled efficiency (over to 99% @ 100 bar)
- PTFE packing as standard or oil fluid barrier
- cast iron body for maximum lubrication
- core tempered martensitic stainless steel plates and gears (58 HRC)
- compatible with existing installations
- tailor made solutions

	SI	PL8	PL2
Viscosity	cP	50-80.000	50-80.000
Capacity rage	cc/rev l/h	0,3-120 0,18-1.080	0,1-140 0,06-1.260
Rotational speed	rpm	10-250	10-250
Max outlet pressure	psi bar	1.450 100	2.175 150
Operating temperature	°C	10-130	10-130

- suitable for polyols, isocyanates, catalysts, additives and silicones
- unparalleled efficiency (over to 99% @ 100 bar)
- different sealing options available
- core tempered martensitic stainless steel body, plates and gears (440B, 58 HRC) ensures high mechanical and chemical resistance
- compatible with existing installations
- tailor made solutions (reduced clearances, SS construction...)
- unbeatable performances with low lubricity plasticizers (up to 100 bar)
- special version for converting industry

Applications:	Materials:	Shaft seal:	On demand:
Polyurethane Bonding agents Process applications Oils General metering	Cast iron body Martensitic S.S. Ni-Alloys	Packing Oil Barrier Mechanical seal Magnetic coupling	ATEX certificate Bi-directional Surface treatment Electrically Heated Drives



Applications:	Materials:	Shaft seal:	On demand:
Polyurethane Silicone Glue General metering Plasticizers Converting	Martensitic Steel Stainless Steel Ni-Alloys	Packing Oil Barrier Mechanical seal Magnetic coupling	Bi-directional Surface treatment Electrically Heated Drives

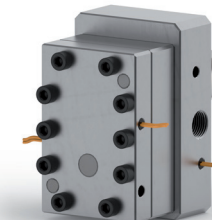
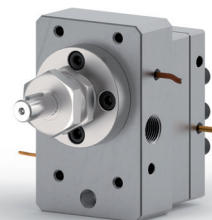
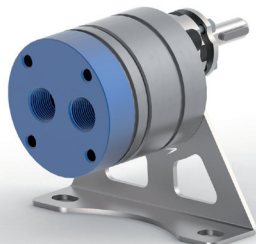
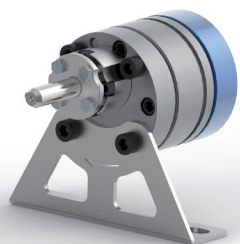
- suitable for abrasive fluids, pigments, colorants, carbide containing fluids (calcium carbonate, titanium oxide...)
- maximum particles diameter: 150 micron (depending on concentration)
- same footprint as PL8 and PL2 for easy upgrading of existing dosing systems
- PTFE packing as standard
- HSS high speed tool steel (65 HRC), for best resistance to high temperature and mechanical wear.
- tailor made solutions

	SI	PAL	PLR
Viscosity	cP	50-1.000.000	50-80.000
Capacity range	cc/rev l/h	0,45-8 0,27 -72	0,3-140 0,18 -1.260
Rotational speed	rpm	10-200	10-250
Max outlet pressure	psi bar	1.450 100	1.450 100
Operating temperature	°C	10 -180	10 -130

- suitable for polyols, isocyanates, catalysts, additives, silicones.
- electric candle heated body or jacketed body for oil or vapor heating
- PTFE packing as standard
- core tempered martensitic stainless steel body, plates and gears (440B 58 HRC) ensures high mechanical and chemical resistance
- compatible with existing installations
- tailor made solutions (reduced clearances, sealing systems, SS construction...)

Applications:	Materials:	Shaft seal:	On demand:
Dyes Pigments Abrasive fluids	High speed steel	Packing Mechanical seal	Surface treatment Drives

Applications:	Materials:	Shaft seal:	On demand:
Polyurethane Bonding agents General dosing	Cast iron body Martensitic S.S. Ni-Alloys	Packing Barrier liquid Mechanical seal Magnetic coupling	ATEX certificate Bi-directional Surface treatment Drives



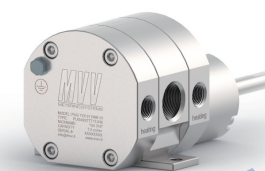
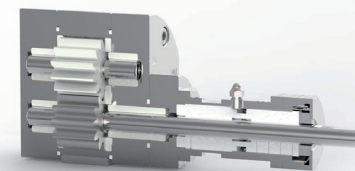
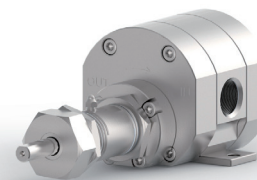
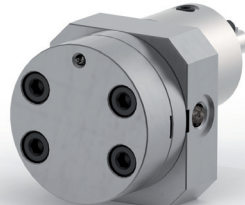
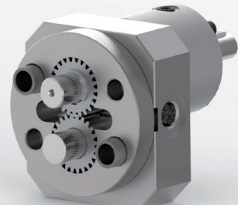
- general purpose industrial duty gear pumps
- extreme metering accuracy (in excess of 1%)
- mechanical seal as standard
- core tempered martensitic stainless steel body, plates and gears (440B, 58 HRC) ensures high mechanical and chemical resistance
- suitable for accurate metering of various chemicals in O&G, petrochemical, power generation and other process applications

	SI	PLZ	PUG
Viscosity	cP	1 - 80.000	1 - 40.000
Capacity range	cc/rev l/h	0,3 - 9 0,2 - 81	1 - 52 6 - 5400
Rotational speed	rpm	10 - 300	100 - 1.725
Max outlet pressure	psi bar	1450 100	176 12
Operating temperature	°C	-20 - 180	-50 - 160

- suitable for corrosive and poor lubricating materials constructed of AISI 316 and alloy 20 materials
- running directly at motor speed (6 or 4 poles, 50 or 60 Hz)
- packing seal as standard or other sealing systems (mechanical seal, mag drive)
- pre-set for cooling/heating jacket
- suitable for accurate metering of various chemicals in O&G, petrochemical, power generation and other process applications
- from 6 to 5.400 LPH

Applications:	Materials:	Shaft seal:	On demand:
Polyurethane Bonding agents General dosing Chemicals	Martensitic S.S.	Double lips Mechanical seal	ATEX certificate Surface treatment Drives

Applications:	Materials:	Shaft seal:	On demand:
Chemicals Oil and gas Pharmaceutical Carbon Graphite	AISI 316 Alloy 20 Thermoplastics Carbon Graphite	Packing Mechanical seal Double mechanical seal	Surface treatments Heating Drives ATEX certificate

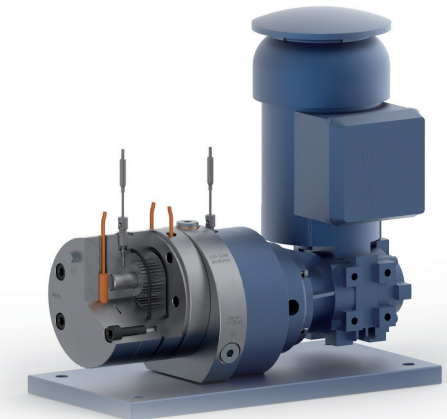
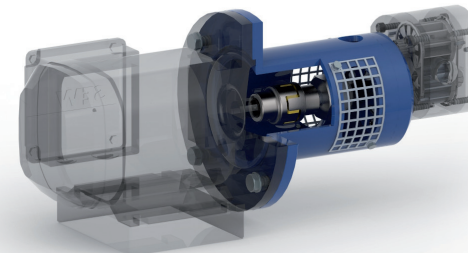
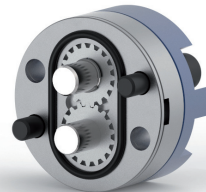
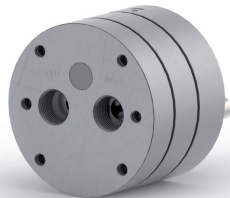
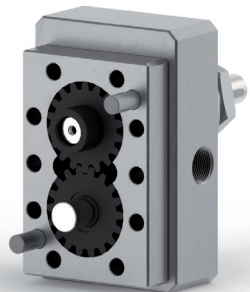


- designed to pump thin and critical fluids
- suitable for solvents or corrosive chemicals
- standard AISI 316 body and plates + PEEK gears
- different MOC on demand
- turn down ratio [10:1] wide thanks to stepper or brushless motors

	SI	PL4
Viscosity	cP	0,5 - 1.000
Capacity range	cc/rev l/h	0,3 - 9 0,2 - 160
Rotational speed	rpm	10 - 300
Max outlet pressure	psi bar	1.450 20
Operating temperature	°C	-20 - 180

- solutions for every pumping need
- from very low flow rates to high speed - high flow systems [0.06 l/h - 6.000 l/h]
- thin to high viscosity chemical fluids dosing ability [0,1 - 1.000.000 cP]
- extreme operating temperatures [-50 +400°C]
- high operating pressures (up to 450 bar)
- solid content, toxic and dangerous
- large selection of motorisation available
- mag drive, mechanical seals or standard packing seal
- threaded ports either BST or NPT and DIN or ANSI flanges available
- ATEX certifiable

Applications:	Materials:	Shaft seal:	On demand:
Chemical Water Solvents	AISI 316 Martensitic S.S. Thermoplastics	Double lips Mechanical seal Packing	ATEX certificate Surface treatment Drives Mag drive

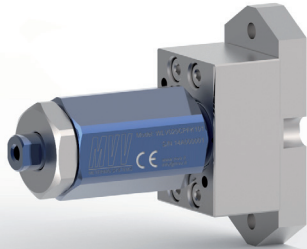
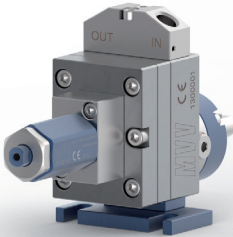
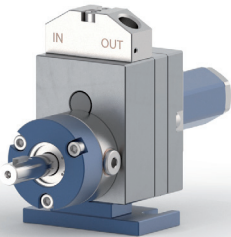
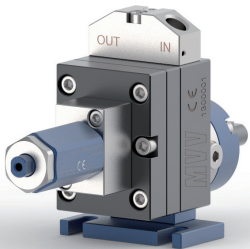


- specifically intended for painting applications (spray gun, robotic systems)
- suitable for abrasive fluids such as pigments, colorants, fluid containing carbide, oxide (e.g. calcium carbonate, titanium oxide, etc.)
- dedicated materials for dyes and particles: PTFE, PEEK, high tech materials to handle abrasive fluids
- modular and easily expandable, with WLV flushing valve or capacity increase kit
- special superficial hardening treatment available

	SI	PLV
Viscosity	cP	1 - 100.000
Capacity range	cc/rev	0,3 - 8
Rotational speed	rpm	10 - 300
Max outlet pressure	psi bar	174 12
Operating temperature	°C	10 - 100

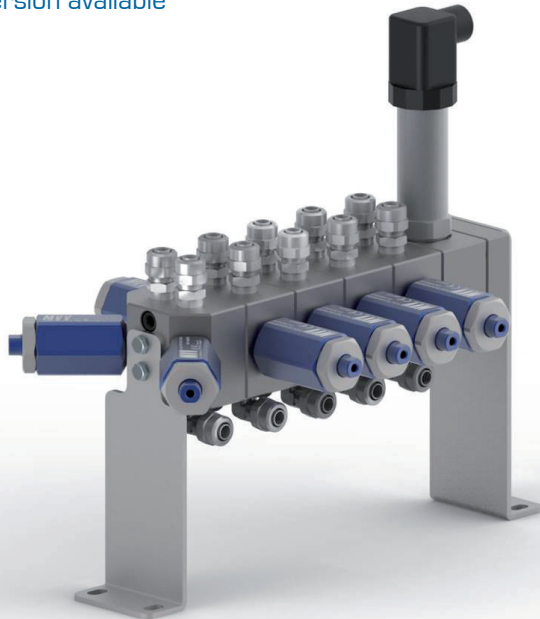
- VLW-flushing valve
- high tech normally closed pneumatic flushing valve
- operates flushing of the painting system with solvents avoiding contamination
- on demand available with proximity sensor
- interchangeable with similar systems from other manufacturers

Applications:	Materials:	Shaft seal:	On demand:
Catalysts Primer Metallized Solvents Resins	Martensitic S.S. Plastic gear	Oil Barrier Special elastomers	Bi-directional Superficial hardening treatment Block for pressure probes Brushless Drives Stepper motor



Modular color change system

- wide choice of configurations
[addition or removal of painting modules based on actual need]
- to be installed in white room
- up to 12 different colors
- very low material waste and time loss
- pressure switch-controlled
- easy to install thanks to the special bracket
- controlled recirculation version available



Lightweight colour change system

- same advantages of the standard colour change system
- modular construction
- aluminium lightweight materials
- direct installation on robot arm
- customizable



- suitable for hot melts used in converting applications: packaging industry, laminates production, edgebanders
- able to handle abrasive materials (up to 150 micron)
- HSS high speed tool steel, for best resistance to high temperature and mechanical wear.
- round or rectangular shape
- on demand superficial treatments
- lip seals as standard

	SI	PA6 / PA7	PF2
Viscosity	cP	50 - 1.000.000	50 - 1.000.000
Capacity range	cc/rev	0,45-8 / 8-50	0,2 - 12
Rotational speed	rpm	10 - 150	10 - 100
Max outlet pressure	psi bar	2.900 / 4.350 200 / 300	2.900 200
Operating temperature	°C	10 - 300	10 - 300

Applications:	Materials:	Shaft seal:	On demand:
Hot melt glue	High speed steel	Lip seal	Surface treatment Drives



- suitable for hot melts used in converting applications: packaging industry, laminates production, edgebanders
- same as PA6/7 but with multi discharge ports
- able to handle abrasive materials (up to 150 micron)
- HSS high speed tool steel, for best resistance to high temperature and mechanical wear.
- round or rectangular shapes
- on demand superficial treatments
- lip seals as standard

Applications:	Materials:	Shaft seal:	On demand:
Hot melt glues	High speed steel	Lip seal	Surface treatment Drives



- suitable for for man made fibers and melted polymers (nylon, PP, PA...)
- HSS high speed tool steel, for best resistance to high temperature and mechanical wear
- on demand superficial treatments
- packing as standard; on demand, MVV viscoseal labirynth or mechanical seal
- on demand available with multiple discharge ports

	SI	PAx	PFx
Viscosity	cP	100 - 1.000.000	100 - 1.000.000
Capacity range	cc/rev	0,3 - 200	0,3 - 100
Rotational speed	rpm	10 - 60	10 - 60
Max outlet pressure	psi bar	4.350 300	4.350 300
Operating temperature	°C	< 350	< 350

Applications:	Materials:	Shaft seal:	On demand:
PP, PA, PA6, PA6,6, PET, PC, PSV	High Speed Steel	Packing Labyrinth sealing Mech-Friction seal	Surface treatment Dynamic mixers Drives

- planetary gear arrangement. multiple discharge ports (up to 16 outlets)
- cylindrical shape for reduced footprints
- suitable for man made fibers and melted polymers (nylon, PP, PA...)
- HSS high speed tool steel, for best resistance to high temperature and mechanical wear.
- on demand superficial treatments
- packing as standard; on demand, MVV viscoseal labirynth or mechanical seal

Applications:	Materials:	Shaft seal:	On demand:
PP, PA, PA6, PA6,6, PET, PC, PS	High Speed Steel	Packing Labyrinth sealing Mechanical seal	Surface treatment Dynamic mixers Drives



- designed for yarn lubrication
- sandwich arrangement, multi stage with multiple discharge ports
- centering pins and mechanical machining precision ensure unparalleled dosing repeatability and accuracy
- core tempered martensitic stainless steel body, plates and gears (440B, 58 HRC) ensures high mechanical and chemical resistance
- lip seals as standard
- complete dosing system including: electrical motor base-plate, gear reducer available on demand

	SI	P94	P96
Viscosity	cP	1 - 4.000	1 - 4.000
Capacity range	cc/rev	0,015 - 0,2	0,2 - 5
Rotational speed	rpm	10 - 60	10 - 60
Max outlet pressure	psi bar	29 2	29 2
Operating temperature	°C	10 - 80	10 - 80

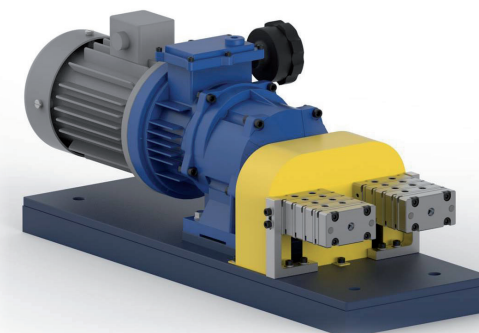
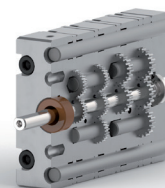
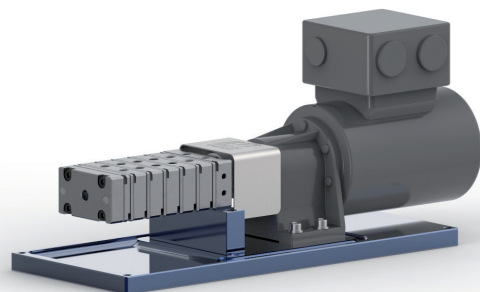
- designed for yarn lubrication
- sandwich arrangement, multi stage with multiple discharge ports (up to 30)
- centering pins and mechanical machining precision ensure unparalleled dosing repeatability and accuracy
- core tempered martensitic stainless steel body, plates and gears (440B, 58 HRC) ensures high mechanical and chemical resistance
- lip seals as standard
- complete dosing system including: electrical motor base-plate, gear reducer available on demand

Applications: **Materials:** **Shaft seal:** **On demand:**

Yarn lubrication Martensitic S.S. Lip seals Drives

Applications: **Materials:** **Shaft seal:** **On demand:**

Yarn lubrication Martensitic S.S. Lip seal Up to 30 outlets
Surface treatment



- high temperature (up to 350 °C) – high pressure applications (up to 500 bar)
- designed to reduce the pulsation downstream extrusion equipment and to highly increase its efficiency
- able to handle abrasive fluids
- HSS high speed tool steel, for best resistance to high temperature and mechanical wear
- packing as standard; on demand, MVV viscoseal labirynth or mechanical seal
- on demand several heating and sensors features
- custom designed solution meeting every and each customers' needs

	SI	PAE	PLE
Viscosity	cP	1 - 1.000.000	1 - 1.000.000
Capacity range	cc/rev	1 - 2.500	1 - 2.500
Rotational speed	rpm	10 - 80	10 - 120
Max outlet pressure	psi bar	7.250 < 500	4.350 < 300
Operating temperature	°C	< 350	< 120

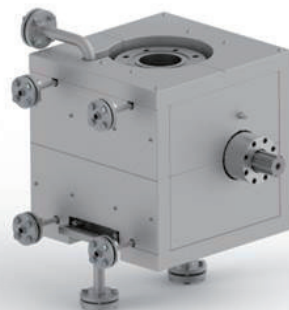
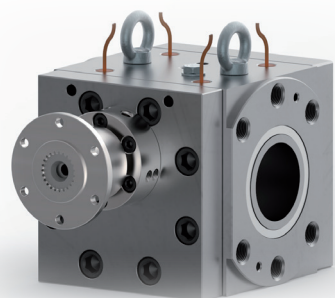
- low temperature (up to 120 °C) – high pressure applications (up to 500 bar)
- designed to reduce the pulsation downstream extrusion equipment and to highly increase its efficiency
- able to handle abrasive fluids
- core tempered martensitic stainless steel body, plates and gears (440B, 58 HRC) ensures high mechanical and chemical resistance
- packing as standard, lip seals on demand
- custom designed solution meeting every and each customers' needs

Applications: PP, PA, PA6, PA6,6, PET, PC, PS

Materials: High speed steel
Nitriding steel

Shaft seal: Labirint seal
Stuffing box

On demand: Bi-directional
Surface treatment
Drives
Sensors
ATEX

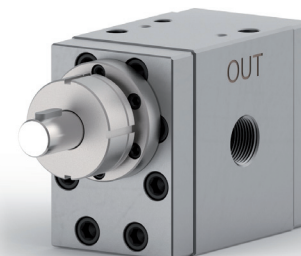


Applications: Chemical Process
Silicone
Glue

Materials: Martensitic SS body

Shaft seal: Lip seal
Packing

On demand: Bi-directional
Surface treatment
Drives
ATEX



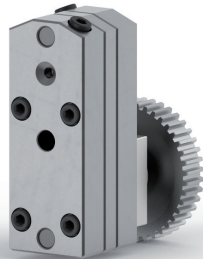
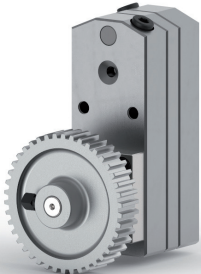
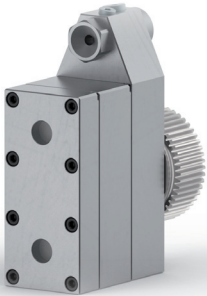
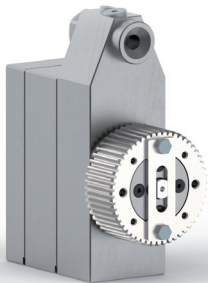
- suitable for acrylic yarn
- core tempered martensitic stainless steel body, plates and gears (440B, 58 HRC) ensures high mechanical and chemical resistance
- standard PTFE packing, lip seals or mechanical seal on demand

	SI	P6x	P55
Viscosity	cP	1.000 - 10.000	1.000 - 10.000
Capacity range	cc/rev	10 - 90	0,3 - 6
Rotational speed	rpm giri/min	10 - 150	6 - 80
Max outlet pressure	psi bar	14,5 - 580 1 - 40	14,5 - 580 1 - 40
Operating temperature	°C	10 - 90	10 - 90

- suitable for acetate solutions
- core tempered martensitic stainless steel body, plates and gears (440B, 58 HRC) ensures high mechanical and chemical resistance
- standard lip seals or mech-friction seal

Applications:	Materials:	Shaft seal:	On demand:
Acrylic solution	Martensitic S.S.	PTFE packing Mechanical seal Lip seal	AISI316 + stellite Ni-Alloy Atex certificate

Applications:	Materials:	Shaft seal:	On demand:
Acetate solutions	Martensitic S.S.	Lip seal Mech-Friction seal	Custom solutions



- suitable for viscose yarn
- core tempered martensitic stainless steel body, plates and gears (440B, 58 HRC) ensures high mechanical and chemical resistance
- cast iron body
- lip seals as standard

	SI	P2x	P5x
Viscosity	cP	1.000 -10.000	1.000 -10.000
Capacity range	cc/rev	10 - 90	0,3 - 6
Rotational speed	rpm giri/min	10 - 150	6 - 80
Max outlet pressure	psi bar	14, 5 - 435 1 - 30	14, 5 - 435 1 - 30
Operating temperature	°C	10 - 90	10 - 90

- suitable for elastomeric yarn (spandex, lycra®)
- core tempered martensitic stainless steel body, plates and gears (440B, 58 HRC) ensures high mechanical and chemical resistance
- up to 8 discharge ports (squared body)
- up to 16 discharge ports (cylindrical body)
- lips seal as standard, PTFE packing or mech- friction seal on demand

Applications:	Materials:	Shaft seal:	On demand:
Viscose	Martensitic S.S. Cast iron body	Lip seal	Custom solutions

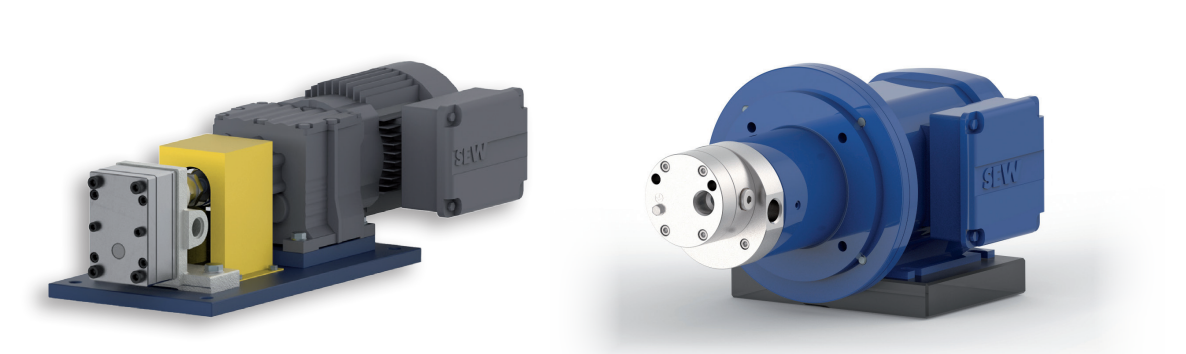


Applications:	Materials:	Shaft seal:	On demand:
Elastomeric yarn	Martensitic S.S.	Lips seal PTFE packing Mech-Friction seal	Custom solutions



MVV is able to supply complete engineered pumping system. Based on the operating data [viscosity, flow rate, rotational speed, pressure], it is possible to calculate torque and power absorption to properly size gear motors. Expertise in pumping application (since 1942) and scouting the best suppliers [gear motors, couplings, sensors and probes] made MVV able to supply the most suitable configuration of the drive system.

Gear Motor:	Coupling:	Chassis:	Carter:
Coaxial Angular Bevel	Elastic joint Gimbal With critical couple protection	Bended sheet metal Welded tubes Extruded Al bars	Metallic Plastics
Cabinet:	Speed check:	Safety:	Certification:
With drives PLC With diplay for process parameters	Encoder Optical fiber Phonic wheel Laser phonic wheel	Room sensors Protection sensors	CE ATEX UL

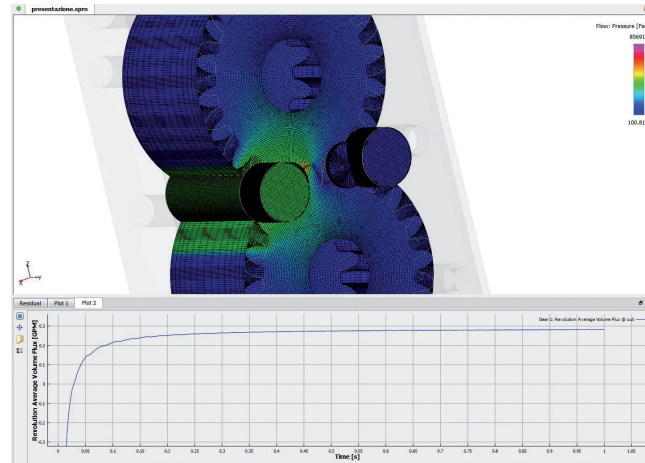


MVV produces static mixers for the chemical and pharmaceutical industry, customizing the product as for the client's requests. Thanks to the high quality on the constructive details, MVV static mixers ensure low load losses and high mixing efficiency. Made of high quality stainless steel and mirrored polished, these mixers are perfect to be used with corrosive and aggressive agents. Easy to clean, they find application in many production cycles, ensuring a constant mixing standard.

Mixer diameter:	Helix sheet-steel thickness:	Helix sheet-steel length:	N. helix sheet-steel:	Materials:
From 4 to 160 mm	From 0,8 to 8 mm L = 1,2 x D	On request	On request	AISI 304 / AISI 316 / AISI 316 TI



Customisation is MVV's day-to-day activity. MVV takes care of customers' requests, by thinking ahead and engineering complete solutions. As an example MVV recently engineered a new micro dosing system (MicroPA6) of 0,16cc/rev specifically intended for laboratory and testing purposes. The pump is driven by an intelligent stepless motor that allows to control, via a simple and efficient touch-screen panel, all the operating parameters. Speed, torque, consumption are constantly monitored, to ensure the best utilization in labs applications.



MVV is able to engineer complete Dosing systems, Spin-packs, Spinning heads, Spinning beams, dyeing equipment and calibration machinery.

MVV has an extensive expertise in the welding processes (in house Certified Welders) and in plastic deformation for tubes and metal sheets. Has also proven experience (since 1942) in fluids handling (heating, insulation, losses, mixing, etc.) thanks also to the modern FEM analysis. MVV can certify its products to existing International Standards: ISO, CE, ATEX, PED.





SPINNERETS

MVV produces customized spinnerets for any dry processing plant of synthetic fibers. Analyzing customer requirements, special holes, shapes and versions are conceived.

Spinning plates can have different shapes: disc, cap, circular, rectangular and many others, with round holes, outlined holes, pilot holes or slots. Anyhow the surface roughness of spinnerets is lower than 0.05 Ra, the capillaries are finished by lapping and the height, as well as hole dimensions, complies with strict tolerances. Each spinneret undergoes severe checks through highly sensitive optical instruments, to verify dimensions and finishing of capillaries. MVV uses a wide range of ferritic or austenitic stainless steels suitably treated or other special materials, all of which resistant to heat and corrosion.

Tollerances

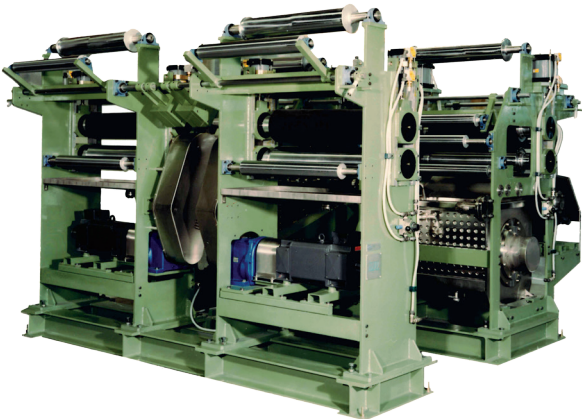
for round holes	capillary diameter height of capillary	$\pm 0,001 \text{ mm} \div \pm 0,005 \text{ mm}$ $\pm 0,005 \text{ mm} \div \pm 0,050 \text{ mm}$
for shaped holes	width of wings length of wings height of capillary	$\pm 0,002 \text{ mm}$ $\pm 0,010 \text{ mm}$ $\pm 0,010 \text{ mm}$



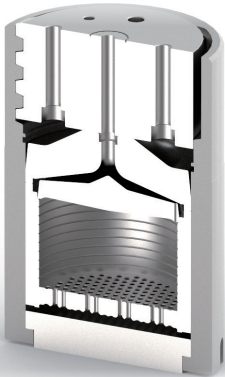
SPINNING BEAM

Following the customer specification, MVV manufactures spinning beams for synthetic fibers such as nylon, polyester, polypropylene and spun-bonding. Using the latest manufacturing technologies, the spinning beams can be heated by conduction, employing diathermic oil and electric resistances, or by induction with diathermic oil vapor.

Modern insulation solutions ensure highest safety levels nearby the heat sources. Upon request, spinning beams can be designed furnished with instruments for the temperature and pressure control, as well as with safety valves certified according to the standards and with freezing valves for maintenance operations even while the plant is operating. The spinning beams made by MVV are tested to ensure compliance with the specific needs of each customer. On request, all MVV's products can be provided with testing certifications according to P.E.D. standards.



Heating system	Diathermic oil immersion resistors	Diathermic oil vapor
Supply extruder (no.)	1 to 6	
Output per hour (kg/h)	According to customer specification	
Pressure pumps (no.)	1 to 72	
Spinnerettes (no.)	1 to 864	
Spinning packs pitch	According to customer specification	



MAINTENANCE

MVV offers in house maintenance with different service levels. Firstly, a visual check is performed both externally and, after disassembly, on the different parts. This first analysis gives information regarding components status and allows double checking the of customer's failure report. Parts are then accurately washed and to determine the operating level of maintenance. There are substantially two levels: first is a revision, so grinding of all contact plane surfaces. Second level is a revamping, substitution of irreparably worn parts. The pump is then tested with at rated capacity and pressure and certified with additional 12 months-warranty.

SPARE PARTS

MVV offers a fast-track spare parts service for all its products. Contact MVV Sales Department for the availability.

TECHNICAL ADVICE

Our Engineers are able to offer technical support for the proper installation and operation of our products and for off the relevant ancillaries. Technical support before or during offer stage often generates dialogue for a new engineered solution. Support and competence are the cornerstone of our customer care.

The experience gained in past years in different industrial application, makes MVV the ideal partner and supplier of special components from drawing or tailor-engineered parts. Spinning packs, changing filters, blocks distributors, dynamic mixers, dyeing machines, etc.. The expertise and machining ability combined with the close collaboration with the network of leading companies in the area, help to give added value MVV offering.

MVV is often required to supply reduced lots of parts in special high-tech materials, tiny tolerances, special processes. Most of the time engineering is the highest cost of all. Our agile and multi-skilled team is able to quickly and accurately assess the work cycle. The combination of passion and expertise makes MVV extremely competitive in small lot production (i.e. 1-10 pcs even for demanding components)





MVV s.r.l. is an Italian company expert in design, production and sales of high precision external gears metering pumps. These pumps are used in different industrial applications: synthetic and artificial fibers, metering of polyurethane components, acid solutions, resins, solvents, catalyzers and hot melt adhesives. The MVV production includes also other highly engineered products: spinning beams, spinnerets for synthetic fibers industry, static mixers, multi-outlets flow distributors and motorizations for the volumetric pumps. Thanks to its expertise in mechanical machining and high-tech materials and special steel, MVV is able to produce special high complexity parts on small batches (1-10 pcs). Customer support on maintenance, repair, service and technical advices completes MVV's technical offer. Our competence, professionalism and flexibility will meet your requirements supplying our up-to - date products and, on demand, our custom solutions. MVV guarantees agreed delivery time and supply, on demand, International Standards and certifications (ISO, CE, ATEX, PED). MVV sells its products worldwide through a network of trained distributors.

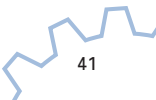
MVV was established in the 1942 in Vittorio Veneto as a branch of SNIA Group, and named M.V.V. Meccanico Vittorio Veneto. In this area, MVV has found excellent conditions to develop its mechanical production.

The company started producing Rayon pumps, then in the 50s' launched pumps for other synthetic fibers and in the 70s' it began to work with finishing pumps. MVV has supplied over a million of gear pumps and millions of spinnerets for filaments extrusion manufactured to supply the main important chemical fiber industries.

2012 a pool of private investors acquired MVV and started a new investment plan with a long term strategy backed by robust investments: moving in a new building located in the production area nearby Orsago and recruiting new talented employees. This new team has brought in the company more than 50 years' experience on pumps production and high precision mechanical, perfectly tuned with MVV's core business.

The cornerstone of the new MVV is the central role of each individual: from the customers to the suppliers and employees, through the compliance with the commitments and the pursuit of excellence in the product quality.

Shown data are indicative only; please contact company for specific application





PMO
CONSULTING

CH-1290 Versoix

Tél. +41 (0) 22 779 09 83

pmo-consulting@bluewin.ch

MVV
GEAR PUMPS